



Liquid- Applied Elastomeric, Water & Weather - Proof Membrane

液態 - 具彈性, 耐候, 防水, 保護膜

Product No. : 421

產品編號 : 421

General Description :

The Coating based on the alkali resistance and the excellent weathering of pure acrylic resin along with special pigments and additives.

一般說明 :

使用耐候, 耐鹼性非常優異之彈性壓克力樹脂, 配合耐候顏料與填充劑精製而成.

Uses :

Specialized at preventing water leak, decorating and protecting concrete building and interior and exterior wall.

用途 :

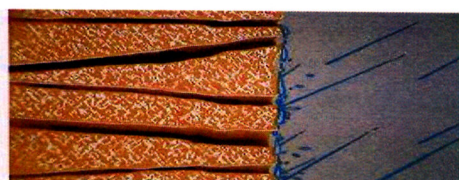
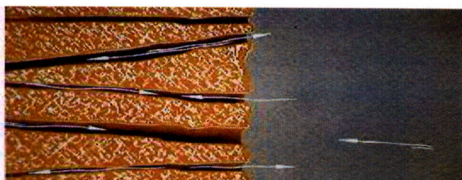
混凝土建築物屋頂, 壁面, 內外壁之防水, 防漏及裝飾保護用.

Characteristics :

1. Excellent elasticity of coating film, it can remain intact even if there is slight crack on cement wall so as to resist water leak.
2. Excellent weathering.
3. Excellent water and alkali resistance.
4. Elasticity up to 200%.
5. Breathing Property - Allow water vapour transmission.

特點 :

1. 彈性優異, 若水泥壁面輕微龜裂, 塗膜可保持完好如初, 不會龜裂, 達到防水防漏功能.
2. 具優異之耐候性
3. 耐水, 耐鹼性良好, 透水率低
4. 伸長率達 200% 以上
5. 具透氣性 - 容許水氣散發



Color Availability :

White and light colors

可調配顏色:

白色, 淺色

Technical Data :**技術資料:**

Finish 光澤		Above 60% 60% 以上
Weight 重量		Above 1.0 Kg/ L 1.0 公斤/ 公升以上
Viscosity (25 °C) 黏度 (25 °C)		100~140 KU (25 °C) 100~140 KU (25 °C)
Drying Time (25 °C) 乾燥時間 (25 °C)	Set-to-touch 指觸	3 hrs 3 小時以內
	Dry hard 堅結	10 hrs 10 小時以內
Optimum Film Thickness 漆膜厚度	Wet 濕膜	580 microns 580 微米
	Dry 乾膜	250 microns 250 微米
Theoretical Coverage 理論塗佈量	Min. 最少	10 m ² / Gal 10 平方米/ 加侖
Overcoating Intervals 塗裝間隔		24 hrs 24 小時
Storage Shelf Life 貯存安定性		Minimum 1 year under normal storage 正常情況下, 至少一年

**虹牌油漆****TAI HING HONG 大興行**

Main Office:
G/F., 103 Shek Pai Wan Road, Aberdeen, Hong Kong
Tel.: (852) 2873 3078 Fax: (852) 2873 4953

Sheung Wan Office:
Unit 1906, 19/F., Bonham Trade Centre,
50 Bonham Strand East, Sheung Wan, Hong Kong
Tel.: (852) 2850 8518 Fax: (852) 2850 8515
Email: paints@taihinghong.biz.com.hk



Application Data :

使用說明 :

Surface Preparation : The moisture, grease, dirt, dust and other contaminants on applied surface must be cleaned thoroughly.

基層處理 : 被塗物表面之水份, 油脂, 灰塵等附著污物必須清除乾淨

: Water content in new cast cement wall must be lower than 12%; otherwise, it will reduce adhesion and performance of paint film.

: 新牆面必須完全乾燥或含水率低於12%以下方可使用

No. of Component(s) : One

組合成份數目 : 1

No. of Coat(s) : Two ~ Three

塗施層面 : 2~3

Dilution : 0~5% with tap water

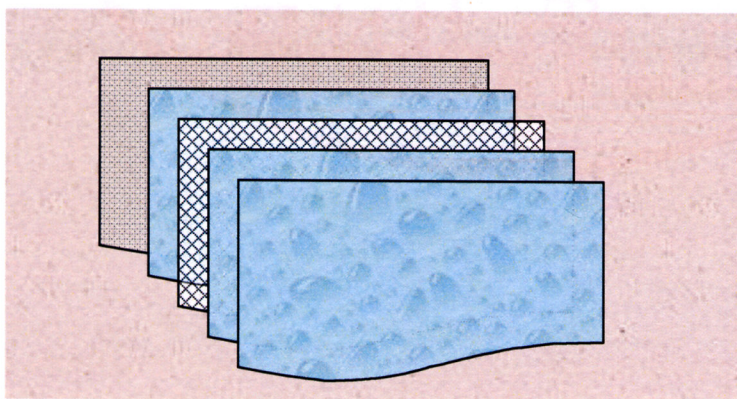
稀釋 : 0~5% 自來水

Preceding Coats : No.420 Solvent Based Elastomeric Sealer

適用底漆 : No.420 彈性面漆用透明油性漆

Application Method : Spray, Brush (available in two-coat and three-coat applications) @ D.F.T. 250 microns

塗裝方法 : 刷塗, 噴塗, 無氣噴塗
分2至3道施工, 建議乾膜厚度至少250微米以上.



	Concrete		混凝土
	Solvent-Based Elastomeric Sealer	No. 420	彈性面漆用底漆
	Water-Based Elastomeric Coating	No. 421	水性彈性面漆
	Fiberglass		纖維網
	Water-Based Elastomeric Coating	No. 421	水性彈性面漆
	Water-Based Elastomeric Coating	No. 421	水性彈性面漆

Packing Style :

No.421 Water-Based Elastomeric
Coating.

3.8 Kg/ USG/ Can
19 Kg/ 5 USG/ Dr.

包裝：

No.421 水性彈性面漆 3.8公斤/美卡/罐
19 公斤/5美卡/桶

Material Handling :

1. Before application, stir paint thoroughly, and when coating is too thick the tap water within specified quantity can be added.
2. Ensure adequate ventilation during application.
3. Avoid contact with eyes. Any eye contamination should be wash immediately with plenty of water and seek medical treatment.
4. Keep away from heat sources.
5. Store materials in a cool, well-ventilated and dry place, away from direct sunlight.
6. If an alternative thinner is used for dilution other than our recommended thinner we will not be liable for any complications or defects arising from the usage of this material.

注意事項：

1. 使用前必須充分攪拌均勻,太稠時,可加清水.
2. 在施工時保證足夠空氣流通.
3. 避免接觸眼睛,如不幸發生應立即以清水.
4. 遠離熱源.
5. 貯存於清涼,乾爽,空氣流通地方,避免陽光直接照射.
6. 如稀釋劑非由我們推薦的,我們將不會保證任何有關使用上所引致的後果及缺點.



No.421

虹牌油漆

TAI HING HONG 大興行

Main Office:
G/F., 103 Shek Pai Wan Road, Aberdeen, Hong Kong
Tel.: (852) 2873 3078 Fax: (852) 2873 4953

Sheung Wan Office:
Unit 1906, 19/F., Bonham Trade Centre,
50 Bonham Strand East, Sheung Wan, Hong Kong
Tel.: (852) 2850 8518 Fax: (852) 2850 8515
Email: paints@taihinghong.biz.com.hk

